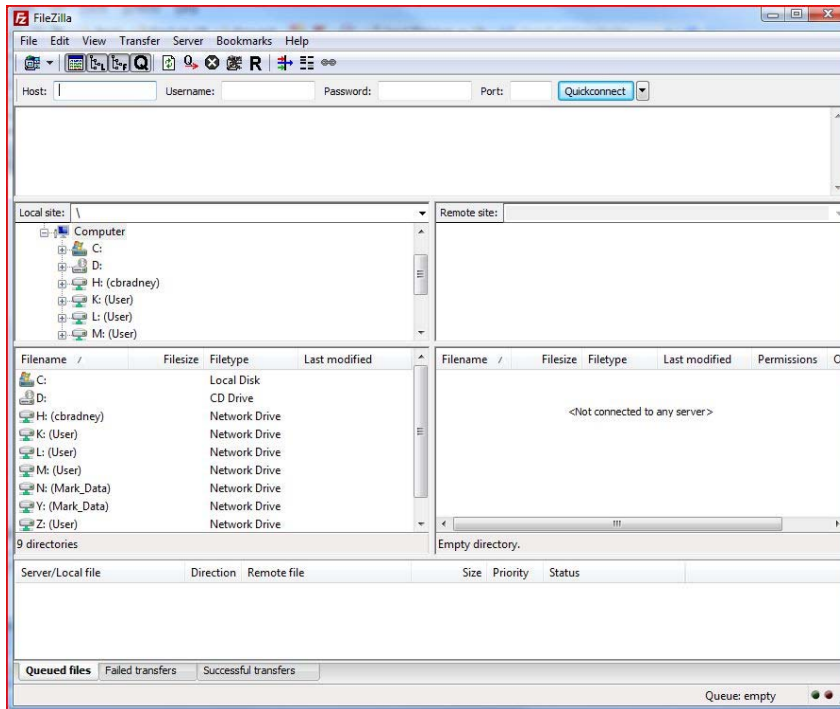


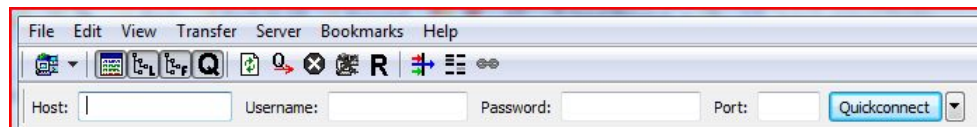
FileZilla for PC and Mac

FileZilla for PC

- Open FileZilla

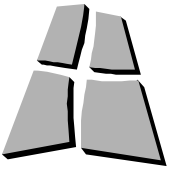


- There are two methods for creating connections to your APU network storage space. For a one single connection to your APU network storage space, you may enter the connection information along the top of the FileZilla window. To permanently store the connection information needed to access your APU network storage space, use the Registered Connection option (preferred).
- Quick Connection option:



Host: <ftp.apu.edu>

Username: your APU NetID; the username used to access the Cougars' Den, library services, etc.



Password: your APU Network Password; the password used to access the Cougars' Den, library services, etc.

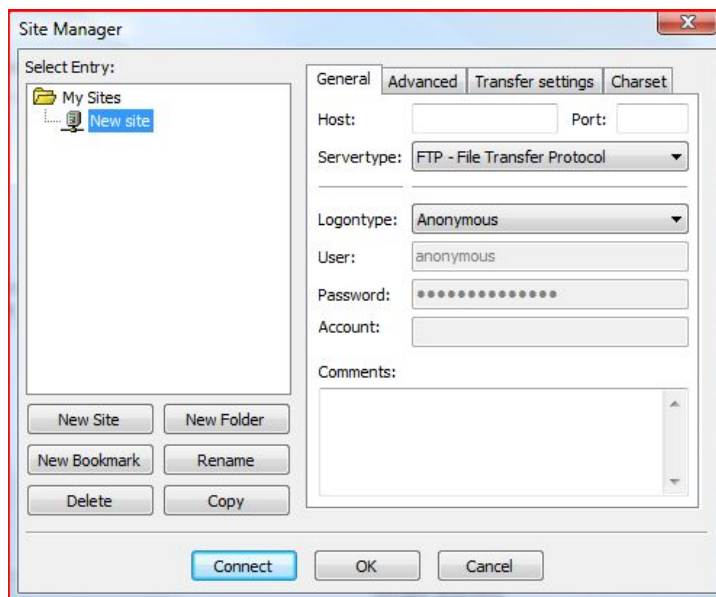
Port: 22

Click "Quickconnect"

If asked if you would like to trust the host, check Always trust this host, and press OK

- Registered Connection option:

Navigate to File -> Site Manager



Click "New Site"

Name the new connection APU (or something easy to remember).

Host: <ftp.apu.edu>

Srvertype: SFTP – SSH File Transfer Protocol

Logontype: Normal

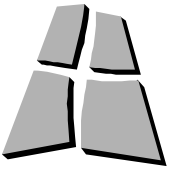
User: your APU NetID; the username used to access the Cougars' Den, library services, etc.

Password: your APU Network Password; the password used to access the Cougars' Den, library services, etc.

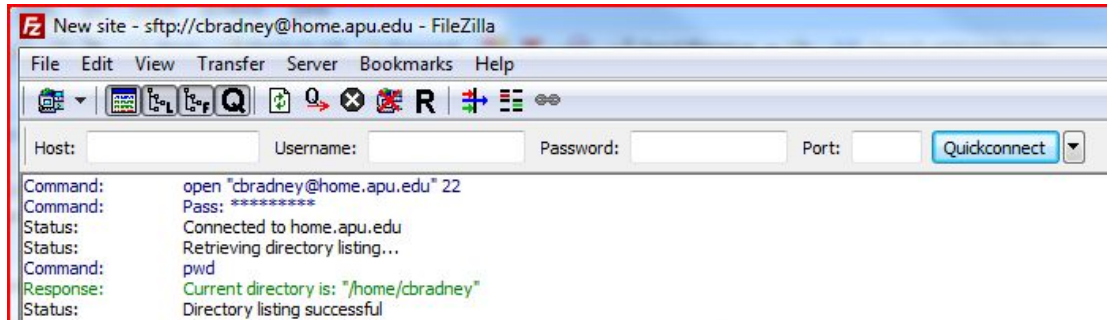
Click "Connect"

If asked if you would like to trust the host, check "Always trust this host" and press OK

- To reconnect using your Registered Connection:



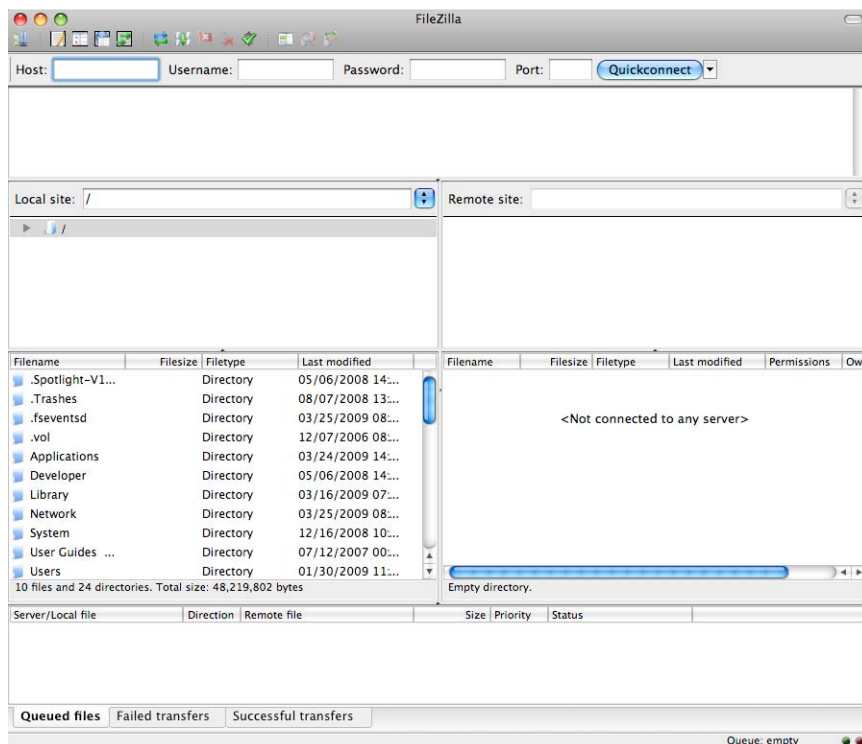
Navigate to File -> Site Manager
Double-click the saved connection you want to use

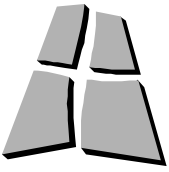


- **Files** listed on the left are located on your computer; files listed on the right are on the APU server. Files to be publicly accessible (via a web browser), such as websites, **must** be placed in the **public_html** folder. Files that you want to store for personal use (accessible through FTP software or by mapping the drive when on Campus) can be placed in your **main** folder.

FileZilla for Mac

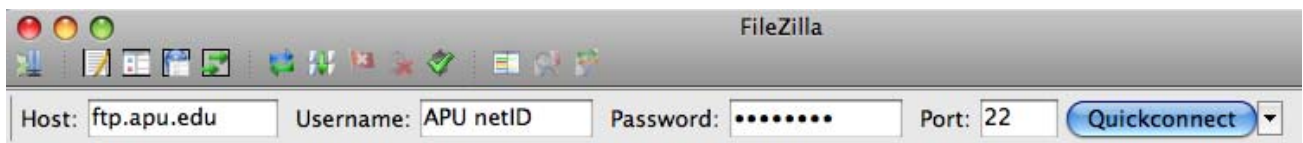
- Open FileZilla





- There are two methods for creating connections to your APU network storage space. For a one single connection to your APU network storage space, you may enter the connection information along the top of the FileZilla window. To permanently store the connection information needed to access your APU network storage space, use the Registered Connection option (preferred).

- Quick Connection option:



Host: <ftp.apu.edu>

Username: your APU NetID; the username used to access the Cougars' Den, library services, etc.

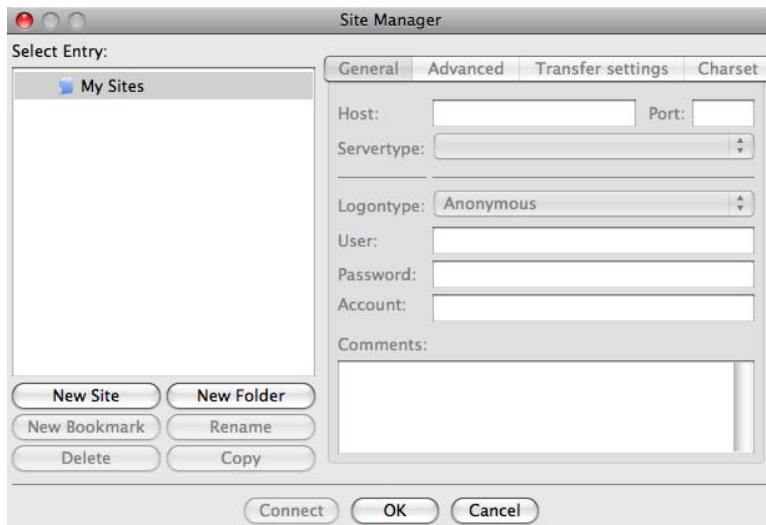
Password: your APU Network Password; the password used to access the Cougars' Den, library services, etc.

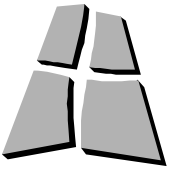
Port: 22

Click "Quickconnect"

If asked if you would like to trust the host, check Always trust this host, and press OK

- Registered Connection option:
Navigate to File -> Site Manager





Click "New Site"

Name the new connection APU (or something easy to remember).

Host: <ftp.apu.edu>

Servertype: SFTP – SSH File Transfer Protocol

Logontype: Normal

User: your APU NetID; the username used to access the Cougars' Den, library services, etc.

Password: your APU Network Password; the password used to access the Cougars' Den, library services, etc.

Click "Connect"

If asked if you would like to trust the host, check "Always trust this host" and press OK

- To reconnect using your Registered Connection:

Navigate to File -> Site Manager

Double-click the saved connection you want to use

- **Files** listed on the left are located on your computer; files listed on the right are on the APU server. Files to be publicly accessible (via a web browser), such as websites, **must** be placed in the **public_html folder**. Files that you want to store for personal use (accessible through FTP software or by mapping the drive when on Campus) can be placed in your **main folder**.